

Spec Sheet
4.06

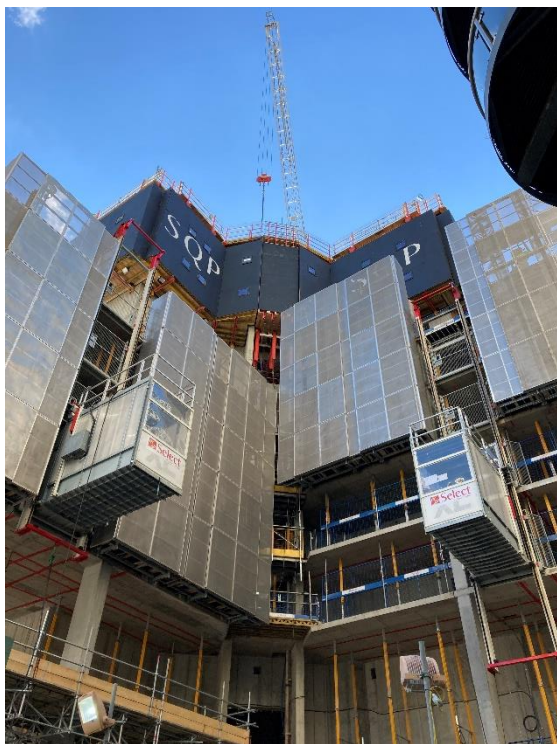
XL L

Form Working Hoist

www.selectplanthire.com

1,700 kg

4.0m



Construction Hoist LL 2500 – High car

Motors	2 SEW motors
Nominal power	2 x 7.5 kW
Nominal current - starting current	32 A - 180 A
Power supply	400 Volts +0% / - 5% - 50 Hz
Phasing	3 + N + E
Command supply	220 V AC & 24 V DC
Electrical cable	H07RNF 5G 16G2
Differential protection	32 A / 4 A – 30 / 300 mA
Electrical socket	220 Volts / 16 A
Electrical box weight	100 kg
Maximum payload	Up to 2200 kg or 22 people
Car dimensions	See chapter 2
Formwork Hoist Configurations	See chapter 2



The Form working hoist is a special designed hoist that is suspended from the top slab of the building. This descends down and can serve up to 4 floors below.

Image is for illustration purposes only and additional information available upon request.

