

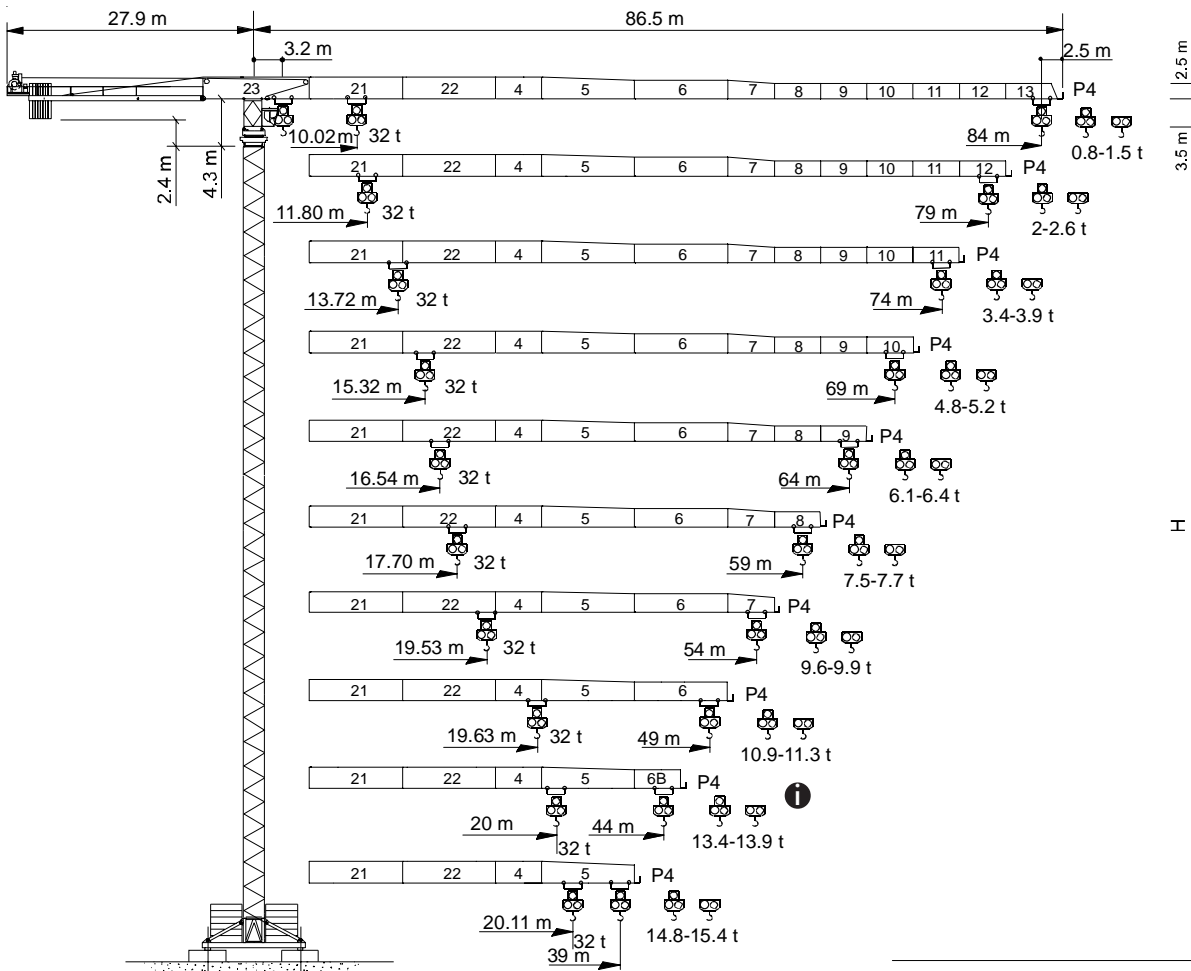


# TEREX® | COMEDIL

## Gru a torre "Flat Top"

"Flat Top" Tower Crane • Grue à tour "Flat Top"

"Flat Top" Turmdrehkran • Grúa torre "Flat Top"



In vigore dal: 01 gennaio 2007. Le specifiche del prodotto ed i prezzi sono soggetti a modifica senza alcun obbligo di preavviso. Le fotografie e/o disegni nel presente documento hanno uno scopo meramente illustrativo. Per il corretto utilizzo di ciascuna attrezzatura, si rimanda allo specifico manuale d'istruzioni. L'inosservanza di quanto previsto nel manuale d'istruzioni nell'utilizzo dell'attrezzatura, così come un comportamento irresponsabile potrebbero cagionare gravi lesioni o il decesso. Le nostre attrezzature sono coperte solo ed esclusivamente dalla garanzia *standard* scritta prevista per ogni specifico prodotto, con esclusione di qualsivoglia ulteriore garanzia, sia tacita che espressa, da parte di Terex. I prodotti e servizi elencati possono essere marchi di fabbrica, di servizi o ragioni sociali appartenenti a Terex Corporation e/o alle sue affiliate operative sia negli USA che in altri paesi e tutti i diritti s'intendono riservati. "TEREX" è un marchio appartenente a Terex Corporation e registrato sia negli USA che in altri paesi. Copyright © 2007 Terex Corporation.

Effective Date: January 01, 2007. Product specifications and prices are subject to change without notice or obligation. The photographs and/or drawings in this document are for illustrative purposes only. Refer to the appropriate Operator's Manual for instructions on the proper use of this equipment. Failure to follow the appropriate Operator's Manual when using our equipment or to otherwise act irresponsibly may result in serious injury or death. The only warranty applicable to our equipment is the standard written warranty applicable to the particular product and sale and Terex makes no other warranty, express or implied. Products and services listed may be trademarks, service marks or trade-names of Terex Corporation and/or its subsidiaries in the USA and other countries and all rights are reserved. "TEREX" is a registered trademark of Terex Corporation in the USA and many other countries. Copyright © 2007 Terex Corporation.

# CTT 561/A-32 HD23

Diagramma di portata  
Load Diagram



Courbes de charges  
Lastkurven



Curvas de cargas



## CTT 561/A - 32

		m	19	24	29	34	39	44	49	54	59	64	69	74	79	84
16 t	- 17,66 m	t	13,65	10,25	8,07	6,56	5,64	4,74	4,03	3,46	2,99	2,60	2,26	1,97	1,72	1,50
16 t	- 17,67 m	t	13,56	9,99	7,71	6,12	5,15	4,21	3,47	2,87	2,38	1,96	1,61	1,31	1,05	0,80
32 t	- 10,02 m	t	13,13	9,74	7,54	6,00	5,06	4,14	3,42	2,83	2,34	1,94	1,59	1,29	1,03	0,80
16 t	- 20,79 m	t	16,00	12,74	10,15	8,35	7,26	6,19	5,35	4,67	4,11	3,64	3,24	2,90	2,60	
16 t	- 20,57 m	t	16,00	12,49	9,84	7,99	6,86	5,75	4,87	4,17	3,58	3,09	2,67	2,31	2,00	
32 t	- 11,80 m	t	16,58	12,49	9,84	7,99	6,86	5,75	4,87	4,17	3,58	3,09	2,67	2,31	2,00	
16 t	- 24,58 m	t	16,00	15,67	12,57	10,42	9,11	7,84	6,83	6,02	5,35	4,79	4,31	3,90		
16 t	- 24,76 m	t	16,00	15,81	12,55	10,28	8,91	7,57	6,51	5,66	4,96	4,37	3,86	3,40		
32 t	- 13,72 m	t	20,27	15,43	12,30	10,11	8,78	7,46	6,43	5,59	4,90	4,32	3,83	3,40		
16 t	- 27,96 m	t	16,00	16,00	14,71	12,23	10,73	9,26	8,10	7,16	6,39	5,75	5,20			
16 t	- 27,40 m	t	16,00	16,00	14,34	11,87	10,37	8,89	7,73	6,79	6,01	5,36	4,80			
32 t	- 15,32 m	t	23,31	17,86	14,34	11,87	10,37	8,89	7,73	6,79	6,01	5,36	4,80			
16 t	- 30,24 m	t	16,00	16,00	16,00	13,45	11,82	10,22	8,96	7,94	7,10	6,40				
16 t	- 29,77 m	t	16,00	16,00	15,85	13,17	11,54	9,94	8,68	7,65	6,81	6,10				
32 t	- 16,54 m	t	25,59	19,68	15,85	13,17	11,54	9,94	8,68	7,65	6,81	6,10				
16 t	- 32,17 m	t	16,00	16,00	16,00	14,49	12,74	11,03	9,68	8,60	7,70					
16 t	- 31,97 m	t	16,00	16,00	16,00	14,36	12,61	10,88	9,51	8,41	7,50					
32 t	- 17,70 m	t	27,75	21,38	17,25	14,36	12,61	10,88	9,51	8,41	7,50					
16 t	- 36,02 m	t	16,00	16,00	16,00	16,00	14,58	12,65	11,13	9,90						
16 t	- 35,42 m	t	16,00	16,00	16,00	16,00	14,27	12,35	10,83	9,60						
32 t	- 19,53 m	t	31,14	24,04	19,45	16,23	14,27	12,35	10,83	9,60						
16 t	- 36,48 m	t	16,00	16,00	16,00	16,00	14,80	12,84	11,30							
16 t	- 35,61 m	t	16,00	16,00	16,00	16,00	14,36	12,43	10,90							
32 t	- 19,63 m	t	31,32	24,19	19,56	16,33	14,36	12,43	10,90							
16 t	- 37,74 m	t	16,00	16,00	16,00	16,00	15,40									
16 t	- 36,51 m	t	16,00	16,00	16,00	16,00	14,80									
32 t	- 20,11 m	t	32,00	24,89	20,14	16,82	14,80									

Altre installazioni  
Other configurations



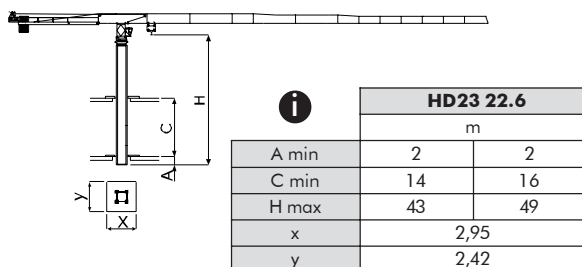
Autres implantations  
Aufstellmöglichkeiten



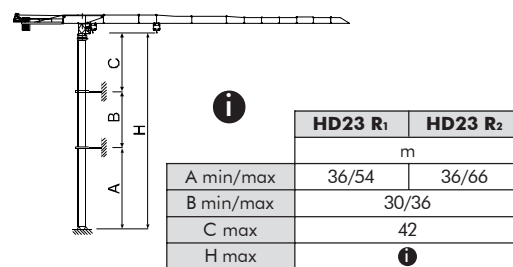
Otras implantaciones



Gru climbing - Bottom climbing crane - Télescopage sur dalles  
Kletterkran im Gebäude - Grúa trepadora



Gru ancorata - Crane tied to the structure - Grue ancrée  
Geankerter Kran - Grúa anclada



Torre **I**

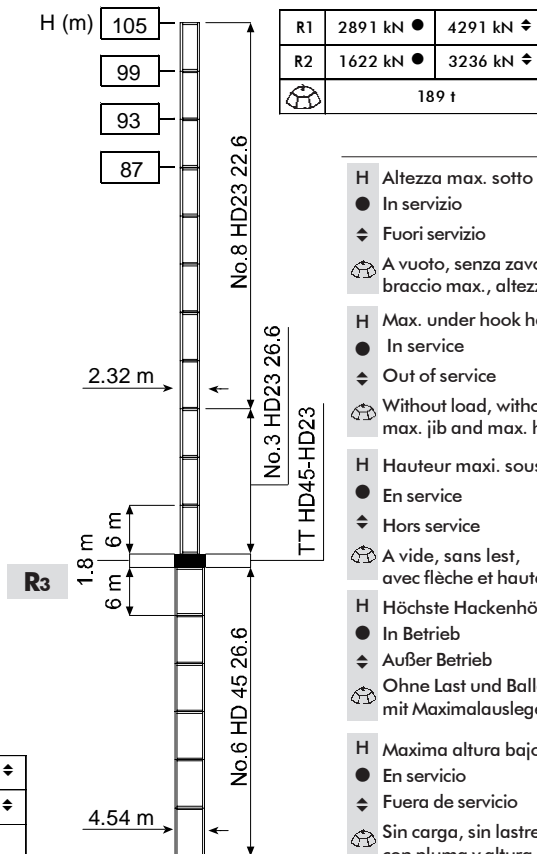
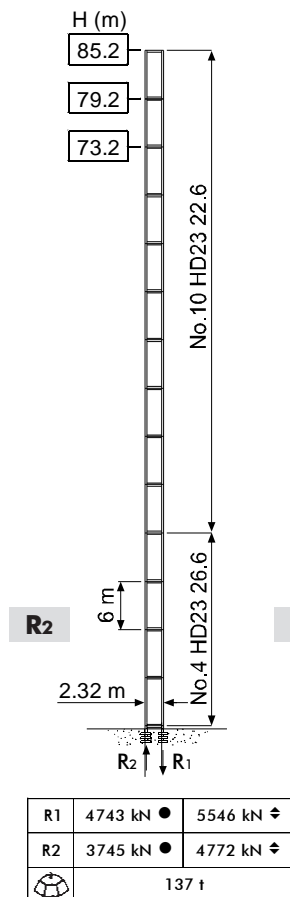
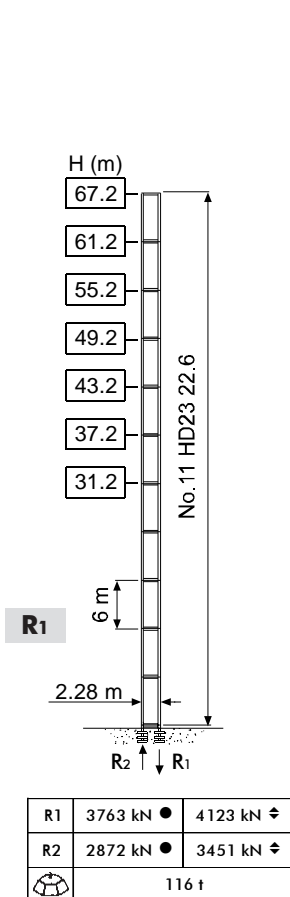
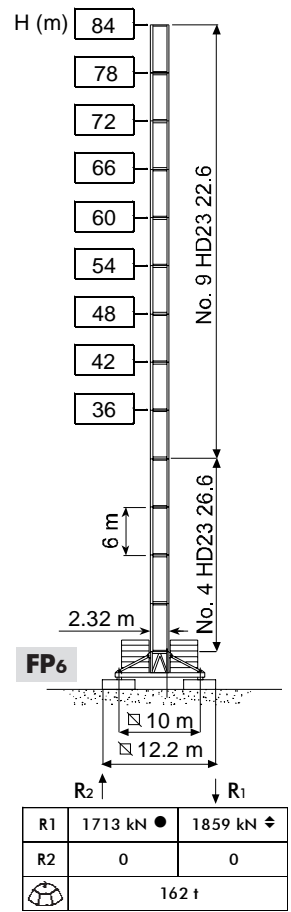
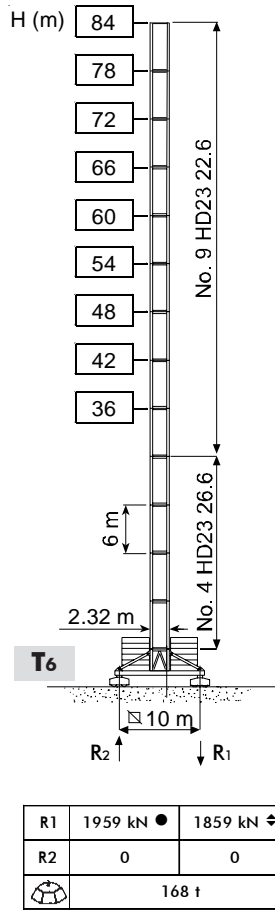
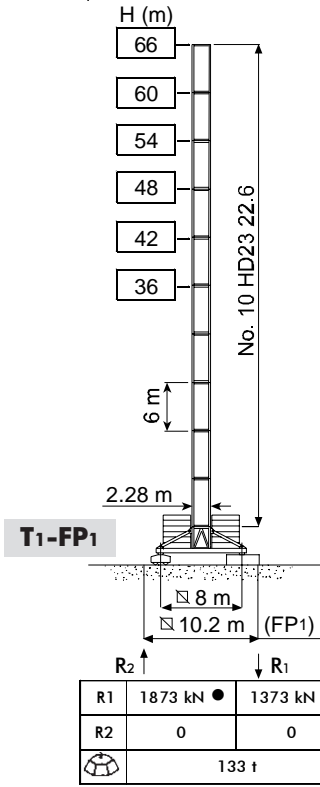
Tower **GB**

Tour **F**

Turm **D**

Torre **E**

**HD23**



- H Altezza max. sotto gancho (vento max. f.s. 151 km/h)
- In servizio
- ◆ Fuori servizio **I**
- A vuoto, senza zavorra, braccio max., altezza max.
- H Max. under hook height (out-of-service max wind 151 km/h)
- In service
- ◆ Out of service **GB**
- Without load, without ballast, max. jib and max. height
- H Hauteur maxi. sous crochet (vent maxi. h.s. 151 km/h)
- En service
- ◆ Hors service **F**
- A vide, sans lest, avec flèche et hauteur maximum
- H Höchste Hackenhöhe (a.B. max. Wind 151 km/h)
- In Betrieb
- ◆ Außer Betrieb **D**
- Ohne Last und Ballast, mit Maximalausleger und Maximalhöhe
- H Maxima altura bajo gancho (viento máximo f.d.s. 151 km/h)
- En servicio
- ◆ Fuera de servicio **E**
- Sin carga, sin lastre, con pluma y altura máxima

	94 AFC 160	196 * kVA	400 V - 50 Hz / 460 V - 60 Hz
			2000/14/CE modificata

\* Gru senza traslazione / Crane without travelling equipment / Grue sans translation / Krane ohne Schienenfahren / Grúa sin traslación

		m/min	t		kW	
 <b>94 AFC 160 D1 (VECTOR 2)</b>  14.50 / 2.70		0 ⇌ 25	16	1°	94	478 m
		0 ⇌ 63	6			
		0 ⇌ 68	5.6	2°		
		0 ⇌ 170	1.5			
		0 ⇌ 13	32	1°		
		0 ⇌ 32	12			
		0 ⇌ 34	11.2	2°		
		0 ⇌ 85	3			

	<b>DVF 5 15</b>	0 ⇌ 100 m/min	15 kW
	<b>SSR 4 4 80</b>	0.73 r.p.m.	4 × 80 Nm
	<b>TVF 2RG 4M9 D1</b>	0 ⇌ 24 m/min	4 × 9 kW
	<b>TSR 2RG 4M8</b>	12 ⇌ 24 m/min (50 Hz)	4 × 80 Nm
	<b>TSR 4RG 4M8</b>	14 ⇌ 28 m/min (60 Hz)	

	Max. H [m]		
T <sub>1</sub>	47.1	47.1	> 47.1
T <sub>6</sub>	47.1	47.1	> 47.1

	Sollevamento	<b>I</b>	Hoisting	<b>GB</b>	Levage	<b>F</b>	Heben	<b>D</b>	Elevación	<b>E</b>
	Marcia velocità		Gear		Rapport		Gang		Velocidad	
	Traslazione carrello		Trolleying		Distribution		Katzfahren		Distribución	
	Rotazione		Slewing		Orientation		Schwenken		Orientación	
	Traslazione		Travelling		Translation		Schienenfahren		Traslación	
	Direttiva sul livello acustico		Directive on noise level		Directive sur le niveau acoustique		Richtlinie für den Schall-Leistungspegel		Directiva sobre el nivel acustico	
	Consultateci		Consult us		Nous consulter		Auf Anfrage		Consultarnos	
	Potenza totale richiesta		Power requirements		Puissance totale nécessaire		Geforderte Stromstärke		Potencia necesaria	
	Alimentazione		Power supply		Alimentation		Stromversorgung		Alimentación	

**Gru Comedil s.r.l.**

A Terex Company



Via S. Egidio 42/A, 33074 Fontanafredda (PN) - Italy  
Tel. (+39) 0434 567 311 - Telefax (+39) 0434 998631

Internet e-mail: info@comedil.com  
Internet home page: www.comedil.com

**Divisione Automontanti**

Via Alessandrina, 25 - 20095 Cusano Milanino (MI) - Italy  
Tel. (+39) 02 613 16011 - Telefax (+39) 02 613 16034

Internet e-mail: info.CBR@comedil.com